



Gresham Smith



Western Connector

Mt. Juliet, Tennessee



Background Information

Andy Barlow, P.E.

Director, Public Works & Engineering

Matthew White, P.E.

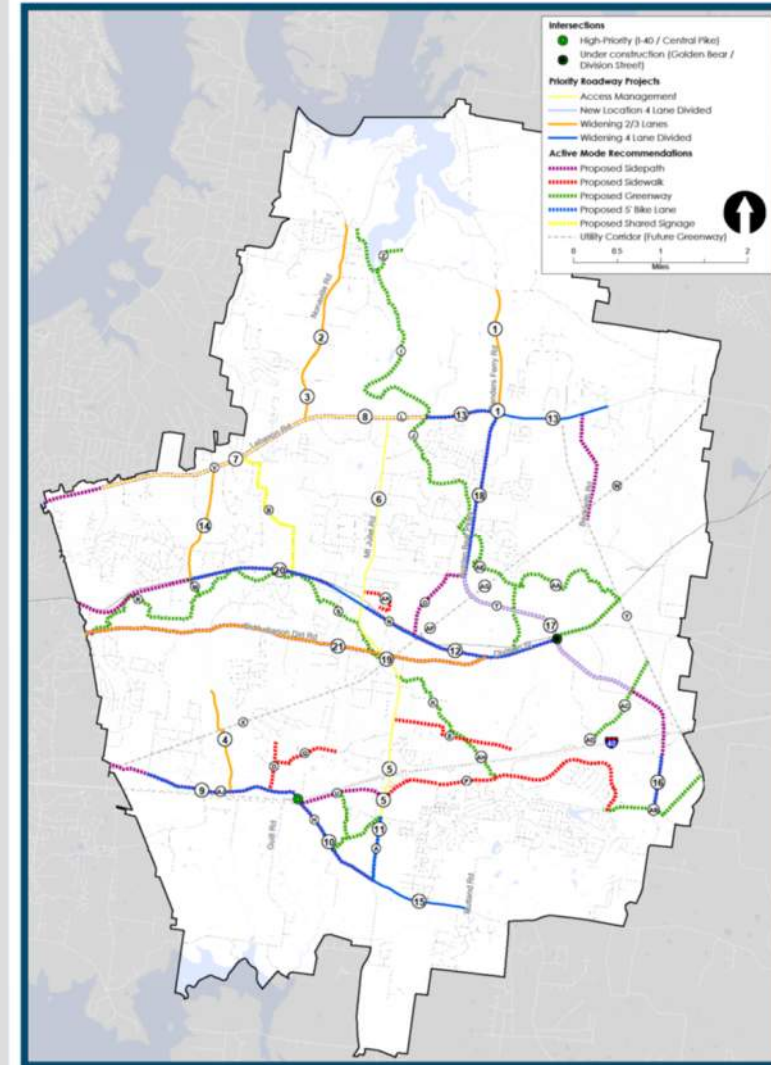
Deputy Director, Public Works & Engineering

Abraham Farias, E.I.T.

Public Works & Engineering

MT. JULIET COMPREHENSIVE TRANSPORTATION PLAN

Adopted February 28, 2025



Prepared by: [Logo]

City of Mt. Juliet
TENNESSEE

Our Team



**Diane
Regensburg, P.E.**
Project Manager



**Patrick Fiveash,
P.E.**
*Senior Roadway
Engineer*



Jeff Branham, P.E.
*Senior Traffic
Engineer*



**Matthew Giles,
E.I.T.**
*Roadway Engineer
In Training*

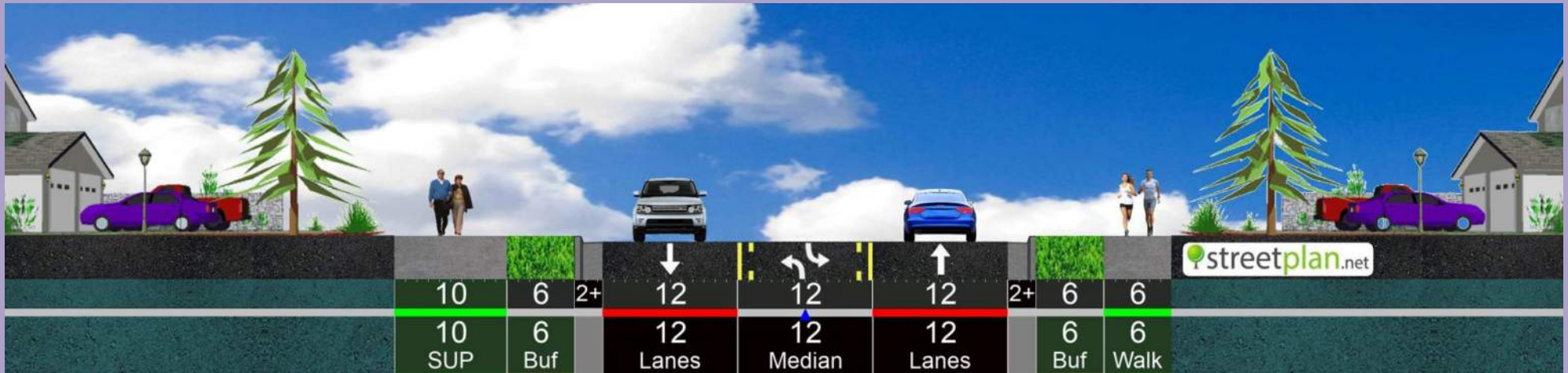


Today's Agenda

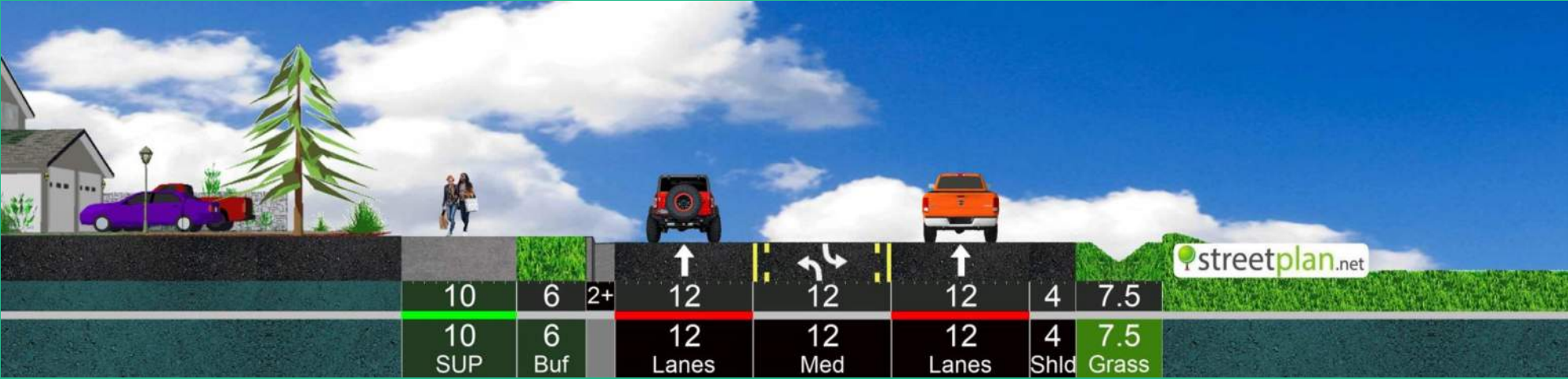
- Purpose & Need
- Typical Sections
- Proposed Alignments
- Detailed Exhibit Discussion



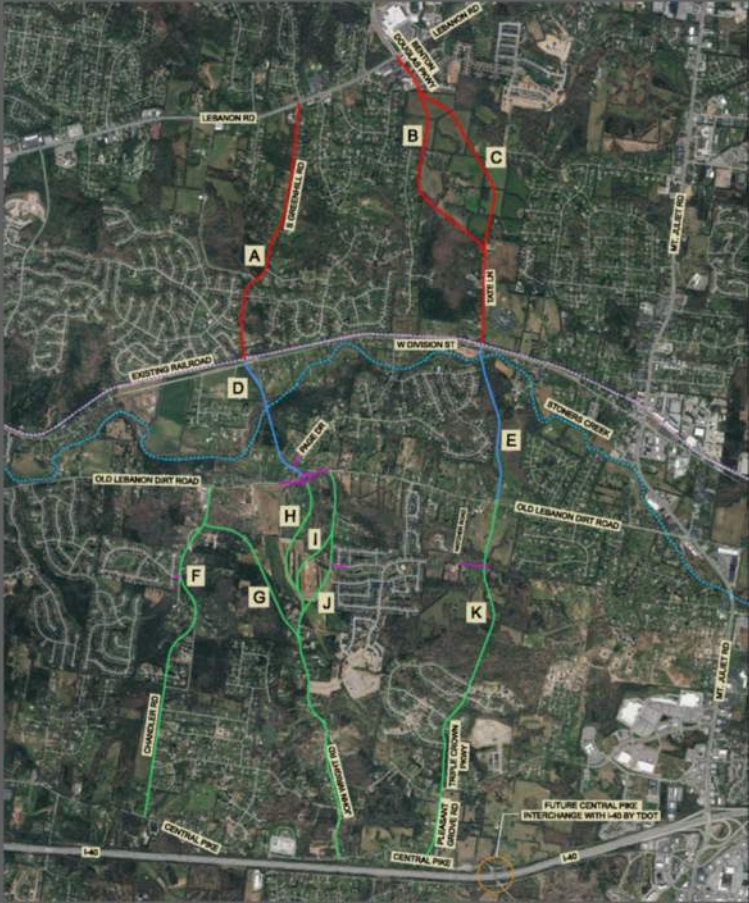
Urban Typical Section



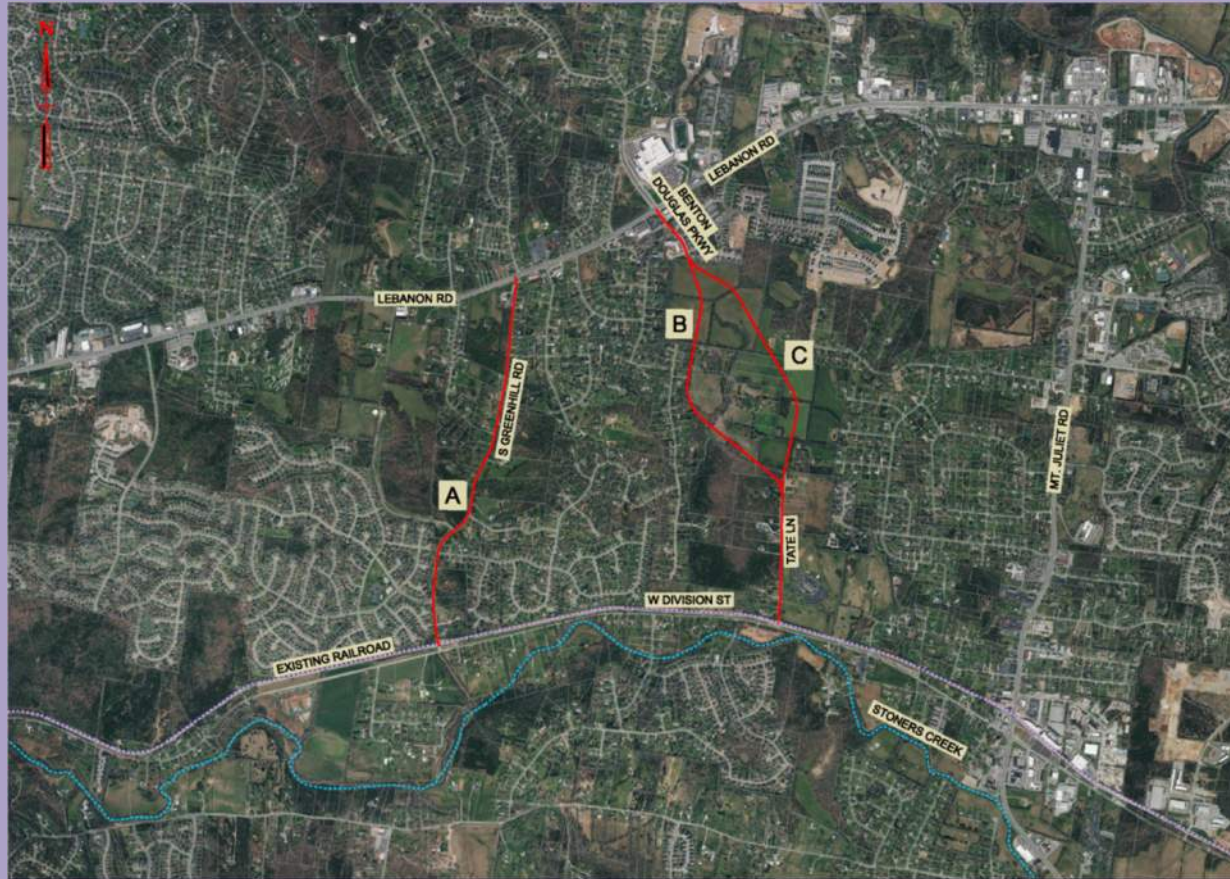
Rural Typical Section



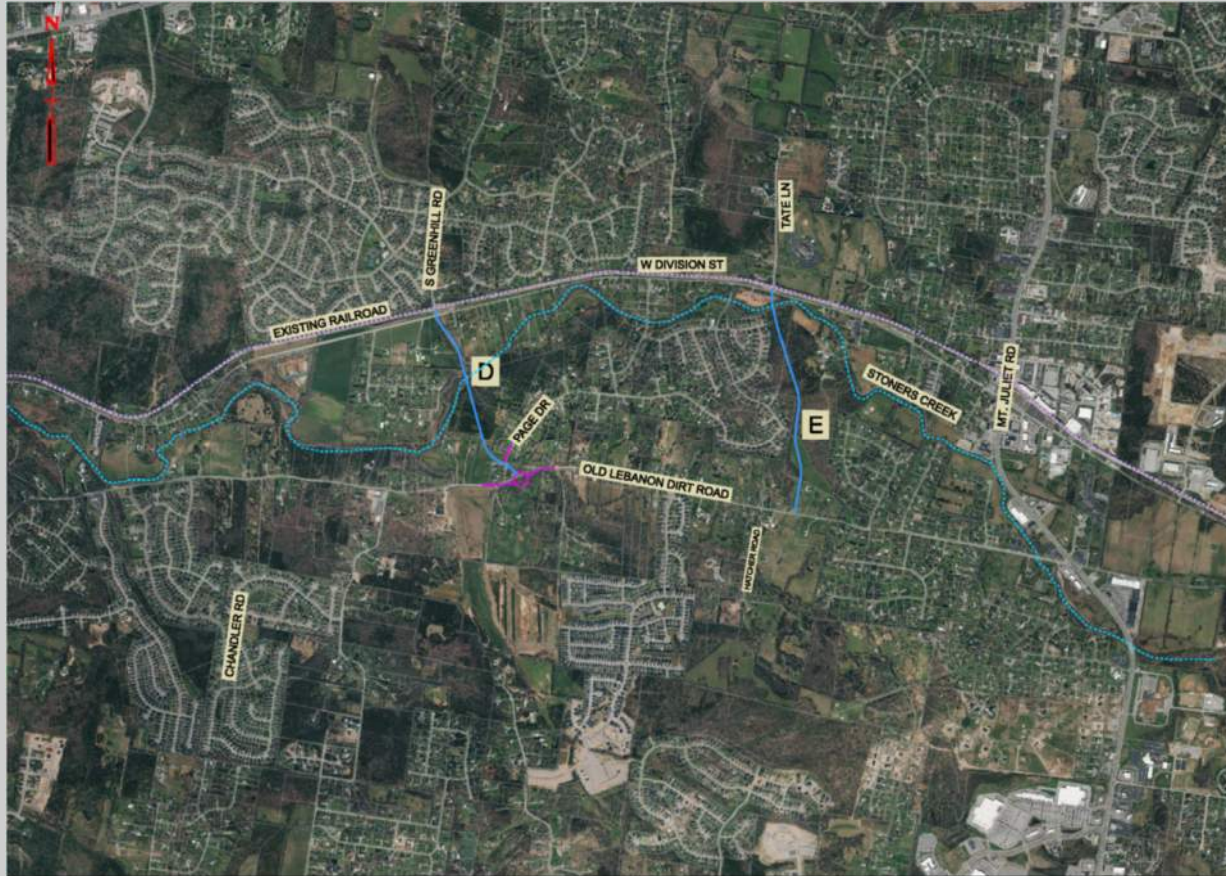
Overview of Alignment Options



Northern Alignment Options



Middle Alignment Options



Southern Alignment Options

